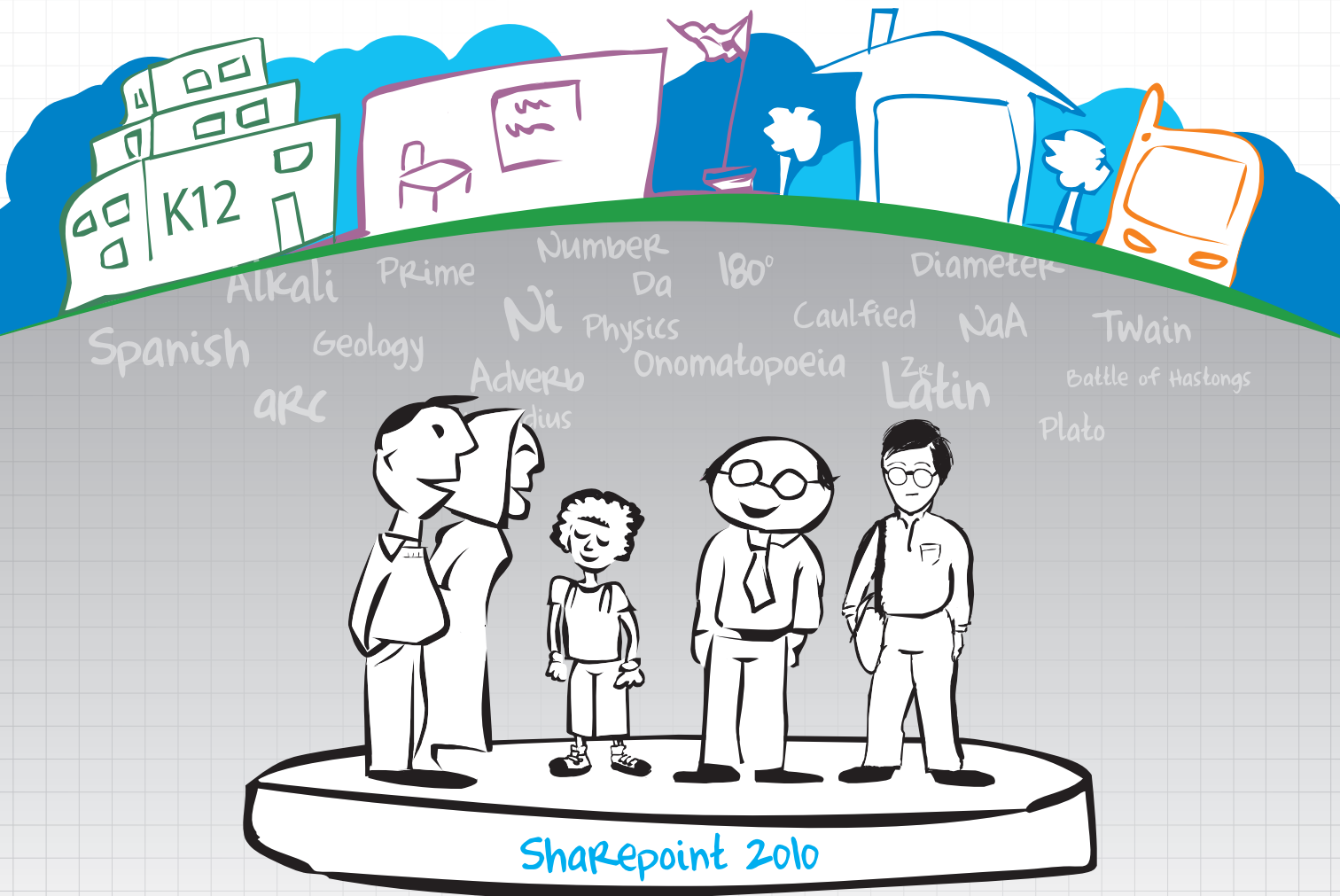




ITWorx Connected Learning Gateway








The Best Social Learning Platform





e-Learning Wrapped Up in the Fun of Social Networking

CLG social networking tools make the education process much more engaging and interactive for all. Teachers communicate with fellow teachers; students interact with their school buddies and teachers; and parents contact teachers and school board.

-  Real-time status updates, newsfeeds, comments, wall-to-wall communication, and multimedia attachments
-  Chats, blogs, forums, wikis, emails, and notes
-  Personalised public e-Portfolios
-  e-Libraries
-  Audio and video conferencing
-  Mobile notifications and alerts
-  Academic content sharing and evaluation



Class Dashboard



Communicate with School Buddies



There is no doubt that CLG 2.0 is a dynamic learning platform that takes all forms of collaboration and communication to the next level. It not only meets all modern pedagogic needs but it is also more practical and robust in function. And technically it speaks clearly of the strength and flexibility of Microsoft SharePoint 2010 and offers customisations that meet school-specific needs.



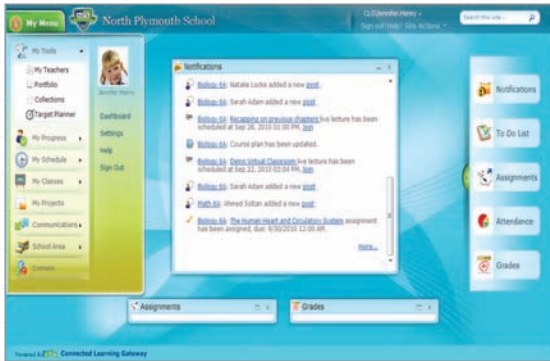


$$x+(a+b)x+ab=(x+a)$$



Personalised Learning Tools for Students

- e-Libraries
- Self-Paced Learning
- Self-Assessment
- Individual Learning Paths
- Engaging Interface
- e-Libraries



Engaging Interface



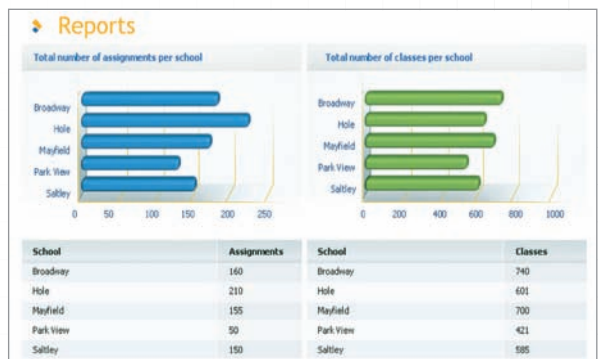
e-Portfolio

Easy-to-Use Tools for Administrators & Management

- Student & Class Academic Progress Reporting
- School & System Performance Reporting
- MIS Integration
- Cloud Computing



System Performance Reports



School Reports



Throughout 295 schools, ITWorx Education suite has helped us in automating the laborious user provisioning and school deployment processes. The resulting cut down in deployment time was up to 80% in comparison to manual deployment. At this pace, we are able to complete deployments ahead of schedules, focusing on creating an engaging learning experience for students and boosting the daily and periodical provisioning tasks.





Innovative Teaching Tools for Educators

Content Authoring & Management

Lesson Plans

Exams, Assignments, Attendance & Behaviour

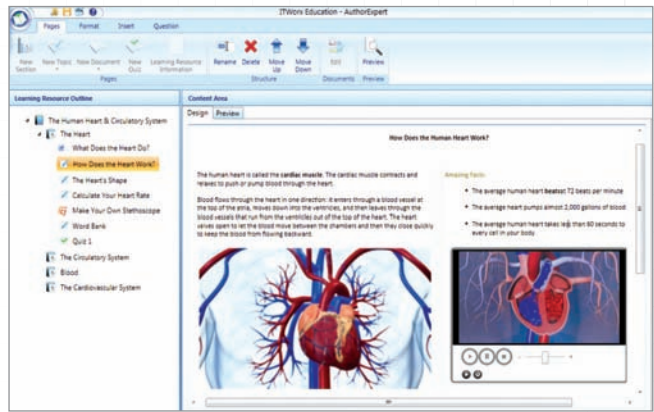
Virtual Classrooms & Live Lectures

Student Performance Tracking

Select Class: SC-5020 Science

| Name | Grade | | | | Attendance | Behavior | Goal Progress | Submissions | Portfolio | Student Card |
|-------------------|-------|-----|-------|-------|------------|-------------------|---------------|-------------|-----------|--------------|
| | Jan | Feb | March | April | | | | | | |
| Anna Benson | A | A | A | A | 100% | Good | 100% | 100% | 100% | 100% |
| Adam Brain | A | A | B | A+ | 95% | Good | 100% | 100% | 100% | 100% |
| Doddy Gurnesinata | A | C | F | A | 80% | Needs Improvement | 100% | 100% | 100% | 100% |
| Adam Brand | B | A | C | D | 75% | Needs Improvement | 100% | 100% | 100% | 100% |
| Willy Mark | A | A | B | A+ | 95% | Good | 100% | 100% | 100% | 100% |
| Sam John | A | C | F | A | 80% | Needs Improvement | 100% | 100% | 100% | 100% |
| Holler Kidman | B | A | C | D | 75% | Needs Improvement | 100% | 100% | 100% | 100% |
| Sharley Adams | A | A | B | A+ | 95% | Good | 100% | 100% | 100% | 100% |
| Con Jubey | A | C | F | A | 80% | Needs Improvement | 100% | 100% | 100% | 100% |
| Sandy Adams | B | A | C | D | 75% | Needs Improvement | 100% | 100% | 100% | 100% |
| Benny Brand | A | A | B | A+ | 95% | Good | 100% | 100% | 100% | 100% |
| Paula Sean | A | C | F | A | 80% | Needs Improvement | 100% | 100% | 100% | 100% |
| Boly Brands | B | A | C | D | 75% | Needs Improvement | 100% | 100% | 100% | 100% |
| John Cuhaf | A | A | B | A+ | 95% | Good | 100% | 100% | 100% | 100% |
| Adam McHeart | A | C | F | A | 80% | Needs Improvement | 100% | 100% | 100% | 100% |

Track Student Performance



Author Learning Resources



Parental Engagement Tools for Parents

Academic Progress Monitoring

Mobile Alerts & Updates

Contact Teachers & School

Connected Learning Gateway

My Children Area | Child's School Area | My Area

My Children: Tony Johns

Attendance

| Monday | Tuesday | Wednesday | Thursday |
|---------|---------|-----------|----------|
| Present | Present | Present | Present |
| Present | Present | Present | Present |
| Present | Present | Present | Present |
| Present | Present | Present | Present |
| Present | Present | Present | Present |
| Present | Present | Present | Present |

Attendance by Subject

Overall Attendance

Attendance



Mobile Alerts

Since launching our e-learning platform, Kent Learning Zone (KLZ), in more than 280 schools, we have noticed increased collaboration through networked communities. Through KLZ, teachers and students are provided with new opportunities to work together, and conduct research and discussions, as well as to share problems, innovations and lesson plans.

Andy Sheppard, Technical Strategy Manager
Education Information Systems (EIS) Kent County, UK



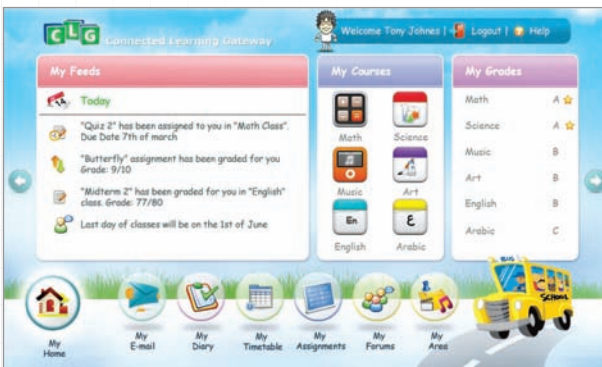
Adoption Program

CLG offers tailored, end-to-end adoption programs that help schools realise excellent results such as major improvements in student performance, increased utilisation of teacher time and effort, and higher school rankings.



Customisation

CLG is a flexible platform designed to accommodate the diverse needs of the education community. Customisations are easily developed and implemented to meet local authority, school and user needs.



Primary Education



Multilingual Platform



Building on the foundation laid by Phase I of "Knowledge Net", we have rolled-out Phase II with new portal features to improve user experience and enhance technology's support of student achievement. Additional training has been provided to teachers to assist them in integrating "Knowledge Net" into their teaching practices to maximise the portal's benefits and ensure students deepen their technology skills.



Dr. Ghadah Omar Al-Fakieh, e-Education Manager
ictQatar, Qatar

Microsoft®
GOLD CERTIFIED
Partner

ITWORX®
agile solutions, real results

Egypt (Headquarters)

Cairo
Nasr City, Free Zone
Area 7B, Block J
Cairo, Egypt
Tel +20 2 2673 6111
Fax +20 2 2673 6188

Alexandria
3 Bahaa El Din Ghatwary St.
Lotus Business Center, Semouha
Alexandria, Egypt
Tel +20 3 4266 774
Fax +20 3 4266 775

United Arab Emirates

Dubai
Dubai Internet City, Block DIC
Building 17, Office 256 & 257
Dubai, United Arab Emirates
Tel +971 4 437 0833
Fax +971 4 437 0832

Saudi Arabia

Riyadh
Sulaimaniya Center, West Building
Office #1115, P.O.Box 26627
Riyadh 11496, Saudi Arabia
Tel +966 1 288 6558
Fax +9661 288 6558

USA

Connecticut
406 Farmington Avenue
Farmington, CT 06032
Connecticut, USA
Tel +1 860 676 7878
Fax +1 860 760 6385

Global Representatives Switzerland

Hunenberg
ITWorx DACH GmbH
Sonneggstr. 61
CH-8006, Zurich, Switzerland
Tel +41 44 251 1502

Nigeria

Lagos
Icarus Technologies
4A Ademola St., Ikoyi
Lagos, Nigeria
Tel +234 80 222 22713

servicerequest@itworx.com